

TJ SERIES OFF-HIGHWAY AND DOT

The "Original Trailer Jockey" - Capacity's ever-popular TJ Series terminal truck.

A proven workhorse that is up to the job, load after load... year after year.



THE RIGHT TRUCK FOR THE JOB

In an industry that continually pushes uptime to its absolute limit, employing the most advanced cargo handling solutions is critical. Fleet operators at marine and rail intermodal terminals are managing an array of challenges unheard of just a few years ago. Faster service, more complex management responsibilities and the push for greater cost efficiencies throughout the job mean fleet operators must work smarter than ever.

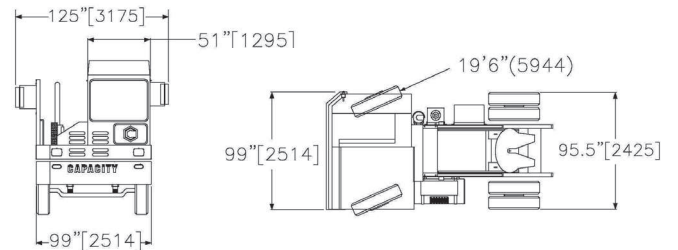
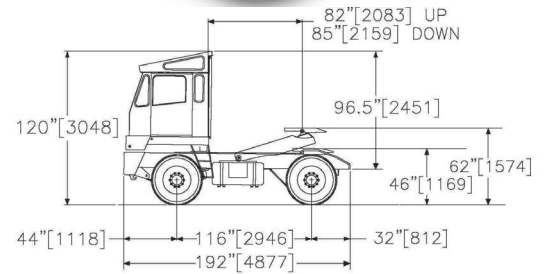
TJ5000

THE PREFERRED CHOICE FOR OPERATOR OF PORTS, RAIL YARDS AND TRUCK TERMINALS

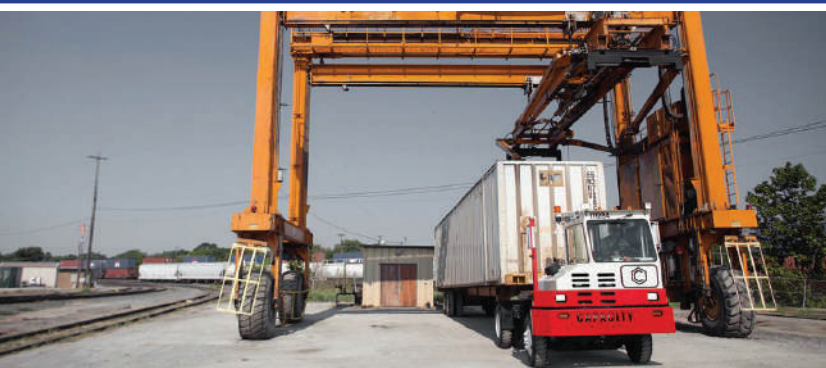
GIVING YOU THE LEADERSHIP EDGE

At any given moment, at port, terminals and distribution centers around the world, there is a Capacity Terminal Tractor taking command of a job.

For more than 40 years, we have earned the reputation for being a leader in design and durability because of our relentless pursuit to keep pushing the cargo industry forward. And while our name is synonymous with powerful terminal tractors, it's our high level of design and unique expertise that truly sets us apart.



WAREHOUSE



INTERMODAL

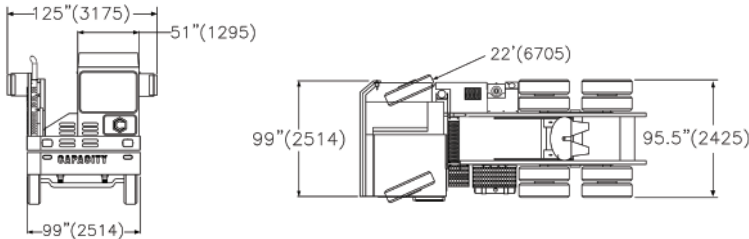
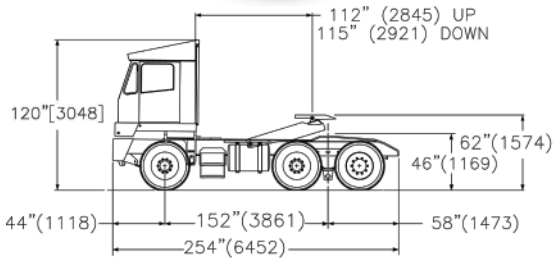


PORT

BUILT TO OUTPERFORM + OUTLAST THE COMPETITION

- The Capacity 5000 Series are comfortable, functional tractors, which include off-highway and DOT Certified models
- The off-highway model is designed to move trailers within the facility around warehousing industries. With its 30,000 lb. rear axle, this unit is perfect for light manufacturing and warehousing/distribution applications. It has a GCW of 81,000 lbs. and gradeability of 81,000 lbs. at 22% grade.
- The TJ5000 DOT Certified unit is built with a highway package that includes a variety of street legal features offering superior versatility.

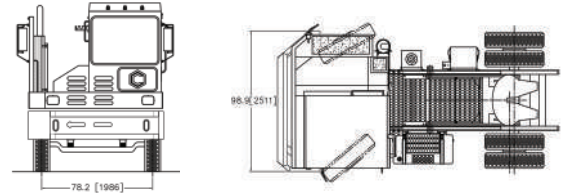
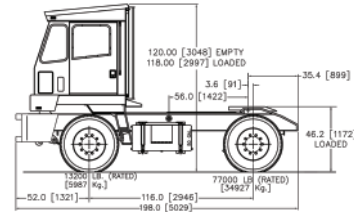
TJ6500



A SERIOUS WORKHORSE THAT GETS THE JOB DONE

- This tandem axle unit is available in both DOT and off-highway versions and has a GCW of 125,000 lbs. with gradeability of 90,000 lbs. at 17% grade.
- The TJ6500 Tandem DOT is ideal for a variety of applications where over-the-road use is required.

TJ9000



THE MOTHER OF PURE MUSCLE

- With its 70,400 lb. planetary axle, this unit is perfect for those extra heavy-duty applications. It has a GCW of 100,000 lbs. at 21% grade. No job is too demanding.

POWERFUL INNOVATIONS INCLUDED

Take one look at a Capacity Terminal Tractor and you'll immediately see why we stand out from the competition. Our high strength, single-piece structural steel is designed to meet your most challenging moves. Our ground-breaking DURA-RIDE® system is the talk of the industry - engineered to provide comfort and safety to the operator while reducing stress and maintenance cost to the tractor.

CAPACITY PRIDES ITSELF IN ESTABLISHING UNIQUE BUSINESS RELATIONSHIPS CUSTOMIZED TO YOUR SPECIFIC BUSINESS NEEDS

Our objective is to be an extension of your operation. Your expertise is in managing terminals. Our expertise is building and providing the truck and support necessary for you to continue to lead your market.

OUR PROMISE: WITH EVERY TRUCK COMES A PARTNERSHIP

PROFIT

- Low cost of ownership
- Increased uptime
- Capacity fuel saver technology

RELIABILITY

- Designed for maximum lifts/moves per hour
- Multiplex technology
- ISO 9001 Certified

FLEXIBILITY

- Signature lease finance option
- 4X2 and 6X4 Configurations
- On road and off-road

DURABILITY

- Patented rear suspension
- Move up to 242,000 pounds
- Engineered to SAE and TMC standards

SAFETY

- Highest level of options
- All-steel cab and one-piece platform

